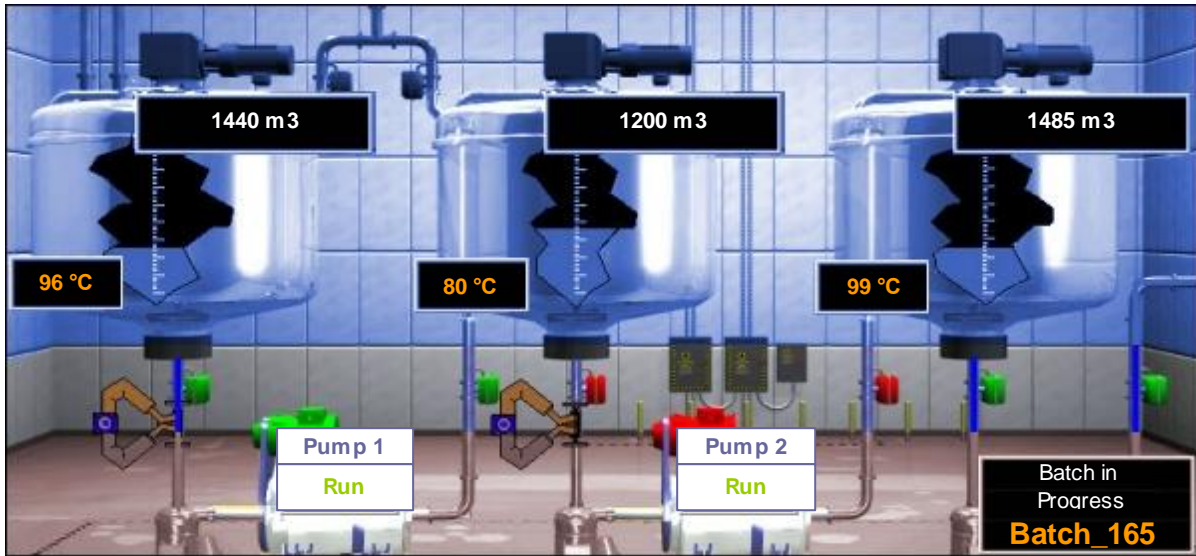


Rep Object **Single Data**



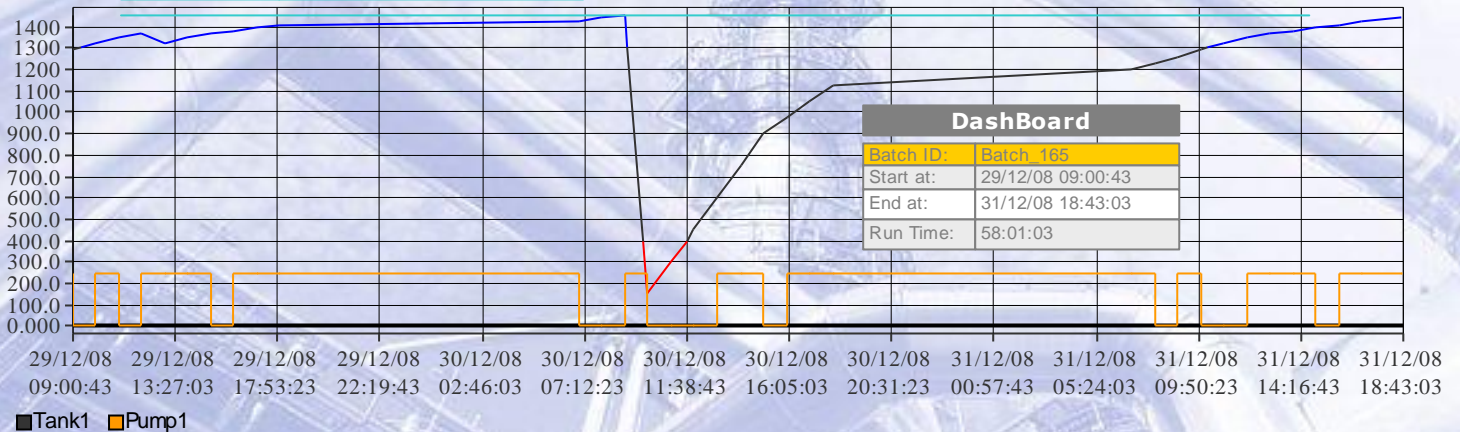
Rep Object **Data Table**

Table Settings	
Time Period:	Last Batch
Value Range:	All
Sorted by:	Timestamp
Order:	Descending
Display Max:	Last 15 Records

Dashboard	
Batch ID:	Batch_165
Start at:	29/12/08 09:00:43
End at:	31/12/08 18:43:03
Run Time:	58:01:03
Values Logged:	34

Timestamp	Current Batch	Tank 1	Tank 2	Tank 3
30/12/08 08:00:00	Batch_165	1440.00	1200.00	1485.00
30/12/08 07:00:00	Batch_165	1425.00	1350.00	1425.00
29/12/08 18:00:00	Batch_165	1410.00	1500.00	1200.00
29/12/08 17:00:00	Batch_165	1395.00	1200.00	900.00
29/12/08 16:00:00	Batch_165	1380.00	900.00	450.00
29/12/08 15:00:00	Batch_165	1365.00	525.00	225.00
29/12/08 14:00:00	Batch_165	1350.00	825.00	75.00
29/12/08 13:00:00	Batch_164	1320.00	975.00	225.00
29/12/08 12:00:00	Batch_164	1365.00	525.00	225.00
29/12/08 11:00:00	Batch_164	1350.00	825.00	75.00
29/12/08 10:00:00	Batch_164	1320.00	975.00	225.00
29/12/08 09:00:43	Batch_164	1290.00	675.00	375.00
...

Rep Object **Chart**



Rep Object **SQL Table**

SQL Table Settings

Batch Table

Batch N°	Timestamp	Tank3	User	Family	Priority	Alarm and Events
Batch_165	31-12-2008 18:43:03	1485.00	Jim	Tank1	8.00	Pumps Runs
Batch_165	31-12-2008 17:00:00	1425.00	Paul	Tank3	8.00	Pumps On
Batch_165	31-12-2008 16:00:00	1200.00	Paul	Tank1	7.00	Tank level High
Batch_165	31-12-2008 15:00:00	900.00	Jim	Tank1	2.00	Ventilation Starts
Batch_165	31-12-2008 14:00:00	450.00	Paul	Tank2	5.00	Watch tank
Batch_165	31-12-2008 13:00:00	225.00	Jim	Tank2	8.00	Temp High
Batch_165	31-12-2008 12:00:00	75.00	Fred	Tank3	9.00	Tank Filled 80%

Batch Table

Batch N°	Timestamp	Tank3	User	Family	Priority	Alarm and Events
Batch_165	31-12-2008 11:00:00	225.00	Fred	Tank1	3.00	Tank High
Batch_165	31-12-2008 10:00:00	375.00	Jim	Tank2	5.00	Tank Filled
Batch_165	31-12-2008 09:00:00	750.00	Jim	Tank3	6.00	Confirm Settings
Batch_165	31-12-2008 08:00:00	1125.00	Fred	Tank2	7.00	Tank Filled 60%
Batch_165	31-12-2008 07:00:00	1350.00	Paul	Tank1	8.00	Valve In Closed
Batch_165	30-12-2008 18:00:00	1500.00	Fred	Tank3	6.00	in Progress
Batch_165	30-12-2008 17:00:00	750.00	Paul	Tank1	9.00	Pumps 100%
Batch_165	30-12-2008 16:00:00	375.00	Jim	Tank1	8.00	Valve Closed
Batch_165	30-12-2008 15:00:00	225.00	Fred	Tank1	5.00	Production Starts
Batch_165	30-12-2008 14:00:00	150.00	Paul	Tank3	5.00	Valve Open
Batch_165	30-12-2008 13:00:00	225.00	Jim	Tank1	8.00	Timer in Progress
Batch_165	30-12-2008 12:00:00	375.00	Jim	Tank1	6.00	Motor Runs
Batch_165	30-12-2008 11:00:00	750.00	Fred	Tank2	7.00	Batch can Progress
Batch_165	30-12-2008 10:00:00	1500.00	Fred	Tank2	9.00	Enter Settings Value
Batch_165	30-12-2008 09:00:00	1500.00	Jim	Tank3	9.00	Mixer runs
Batch_165	30-12-2008 08:00:00	1485.00	Paul	Tank1	7.00	Valves Open
Batch_165	30-12-2008 07:00:00	1425.00	Paul	Tank2	2.00	Starts System
Batch_165	29-12-2008 18:00:00	1200.00	Jim	Tank3	3.00	Production Starts
Batch_165	29-12-2008 17:00:00	900.00	Paul	Tank2	4.00	Pumping Starts
Batch_165	29-12-2008 16:00:00	450.00	Jim	Tank1	4.00	Reset all
Batch_165	29-12-2008 15:00:00	225.00	Fred	Tank2	5.00	Tank Low
Batch_165	29-12-2008 14:00:00	75.00	Fred	Tank2	6.00	Production Starts

