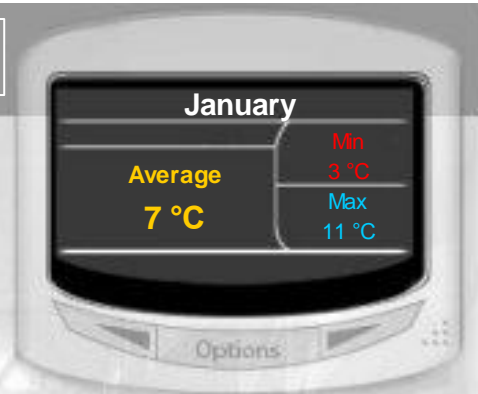


Building and Energy Management



Monthly Report

Report Generated 21/01/2009

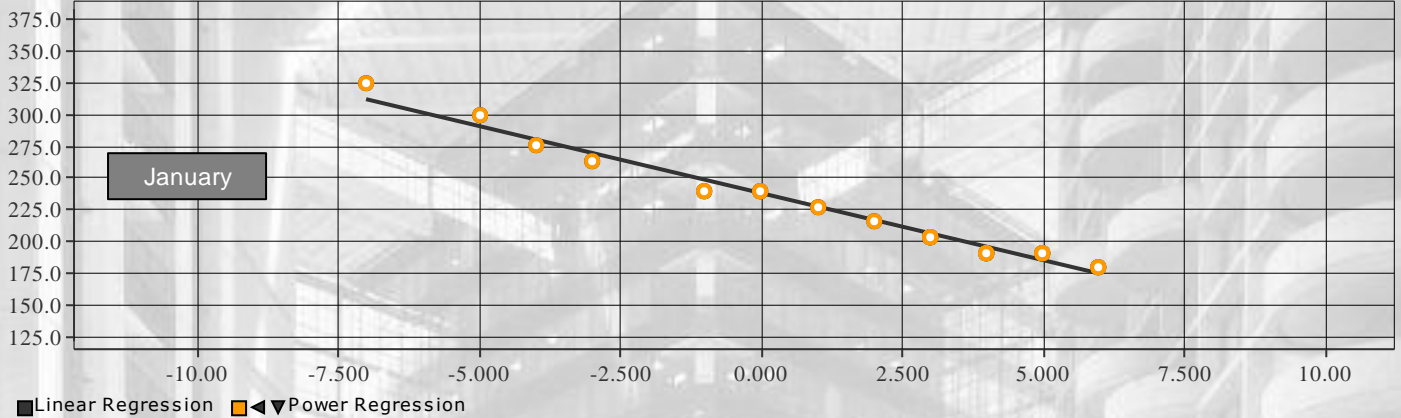


Energy Management

This energy report is based on consumption and use from:

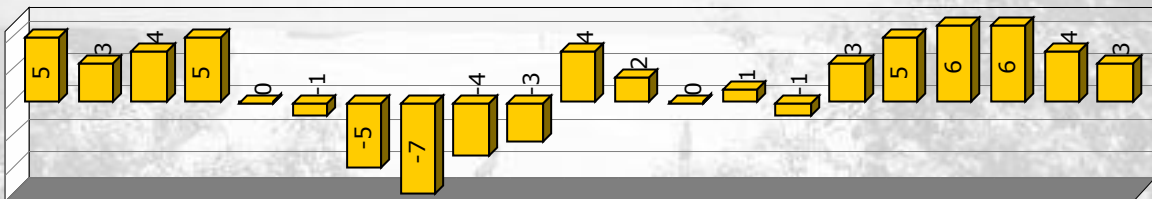
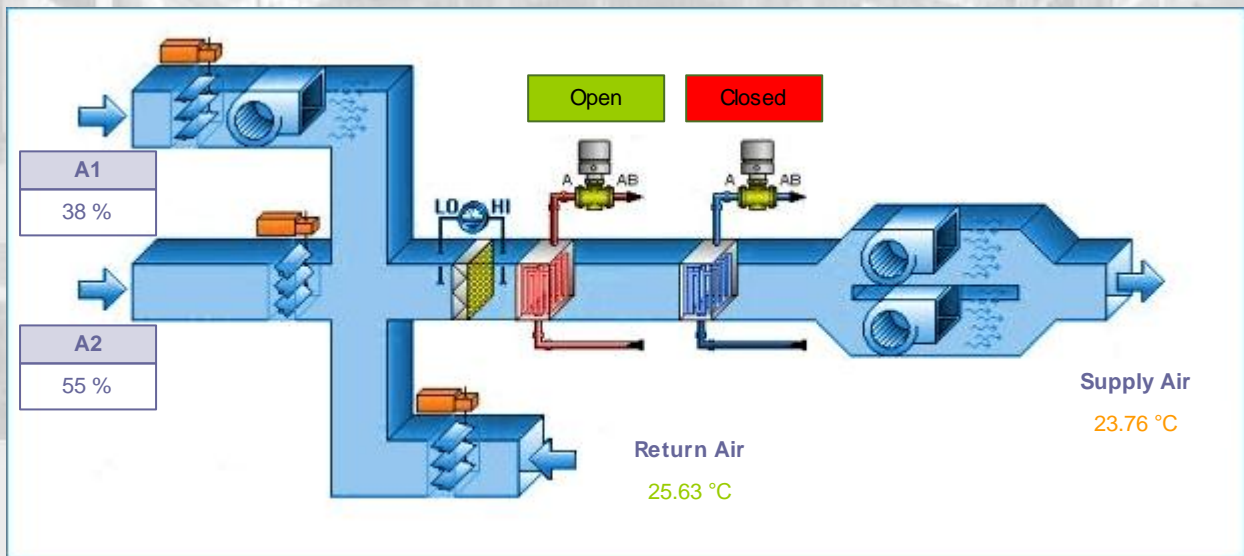
- Electrical Distribution Systems
- Energy Producing Systems
- Building Envelope
- HVAC Systems
- Lighting
- Motor and Drives
- Other energy-consuming equipment

Energetic Signature of the Building

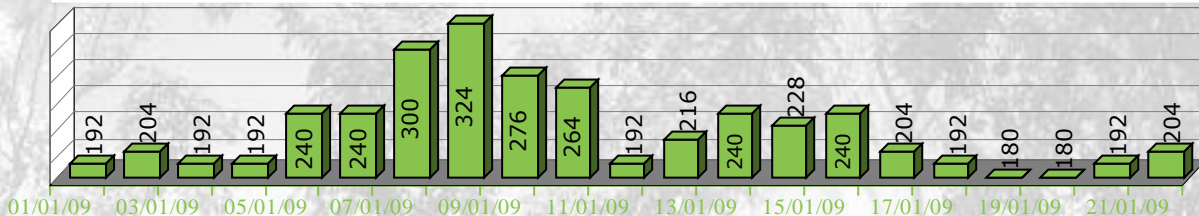


HVAC System

HVAC stands for heating, ventilation, and air conditioning. HVAC systems control the ambient environment (temperature, humidity, air flow, and air filtering).



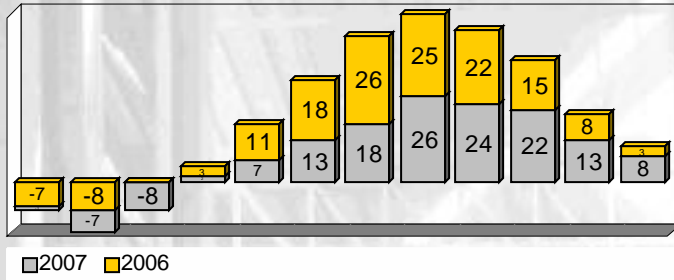
External Temperature °C



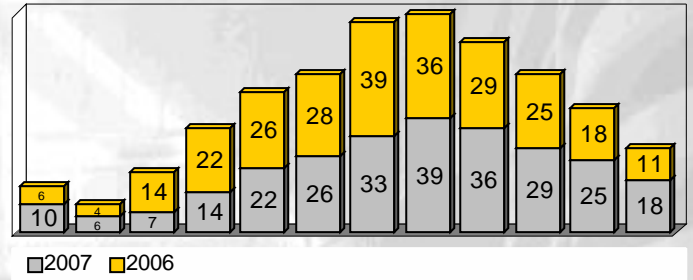
Energy Consume



Minimum Temperature Comparison



Maximum Temperature Comparison



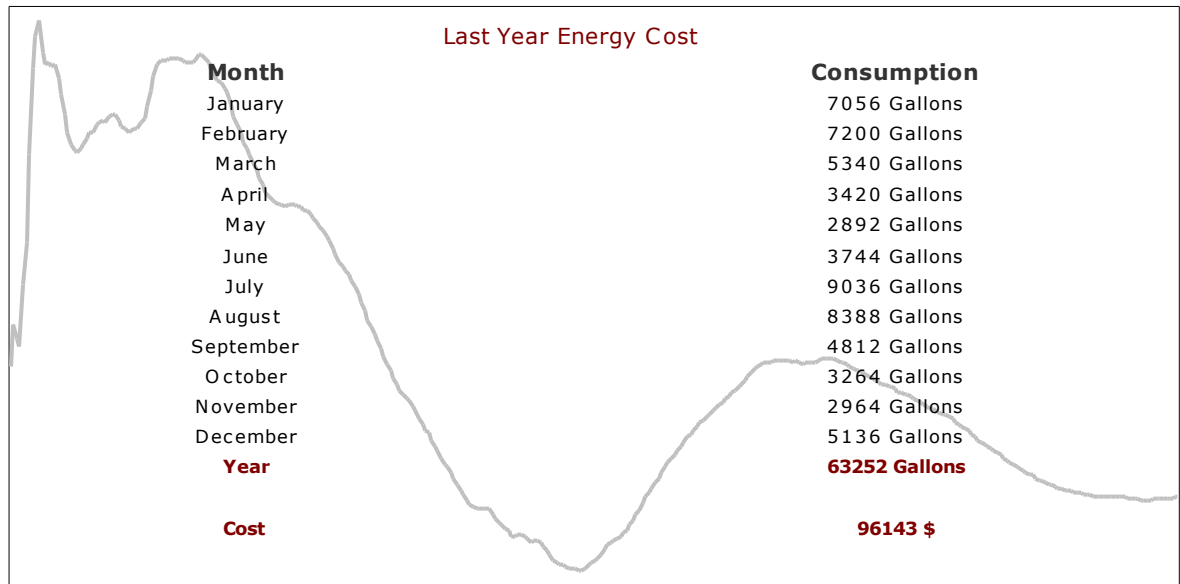
Last Year Temp Evolution

	Min	Average	Max	Deviation
January	-7.00	0.94 °C	6.00	3.46 °C
February	-8.00	-0.93 °C	4.00	2.90 °C
March	-14.00	5.91 °C	14.00	5.10 °C
April	3.00	12.87 °C	22.00	5.23 °C
May	11.00	20.06 °C	26.00	3.93 °C
June	18.00	23.27 °C	28.00	2.30 °C
July	26.00	32.52 °C	39.00	3.34 °C
August	25.00	30.94 °C	36.00	2.75 °C
September	22.00	24.77 °C	29.00	1.90 °C
October	15.00	21.58 °C	25.00	2.80 °C
November	8.00	14.30 °C	18.00	2.65 °C
December	3.00	7.16 °C	11.00	2.24 °C
Yearly stats	-14.00 °C	16.11 °C	39.00 °C	

Current Year Temp Evolution

	Min	Average	Max	Deviation
January	-7.00	1.43 °C	6.00	3.61 °C
Yearly stats	-7.00 °C	1.43 °C	6.00 °C	

Last Year Energy Cost



01/01/08 03/02/08 07/03/08 09/04/08 13/05/08 15/06/08 18/07/08 20/08/08 23/09/08 26/10/08 28/11/08 01/01/09
Moving average consumption